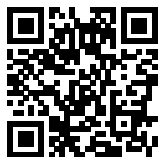


SINGLE WALL STAINLESS STEEL AISI 316/L

Available diametres

Ø 80÷120

Documentation



DoP T200

get.atimariani.it/dop/DOP08.pdf



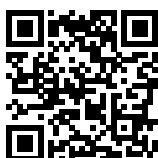
DoP T250

get.atimariani.it/dop/DOP09.pdf



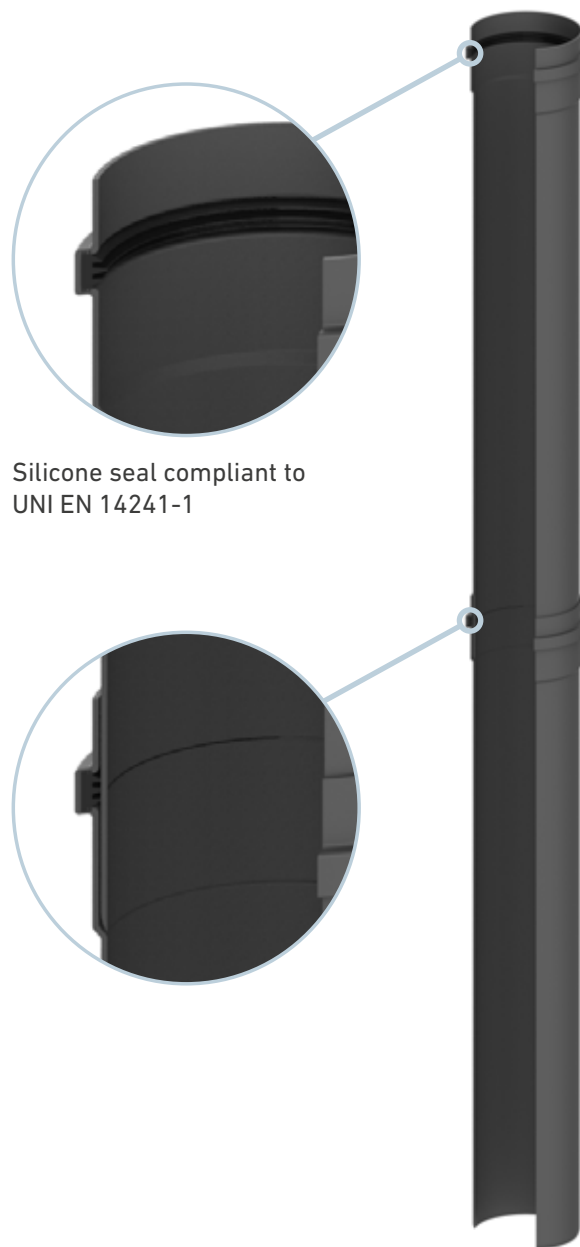
Instruction manual

get.atimariani.it/man/MANUT-FUM-003.pdf



Catalogue section

get.atimariani.it/engcat/INOX-BK-SW.pdf



Silicone seal compliant to
UNI EN 14241-1

Applications



**Indoor
installation**



**Pellet burning
stoves**



Product designation according to UNI EN 1856-2: 2009

Stainless steel single wall.

Temperature	Pressure	Condensate	Corrosion	Flue liner material specification	Sootfire	Min. distance to combustible material
T250 max 250 °C	N1 40 Pa	D Dry utilization	V2 Corrosion class	L50050 Stainless steel 0.5 mm	G Resistant (without seal)	700M 700 mm
T250 max 250 °C	N1 40 Pa	D Dry utilization	V2 Corrosion class	L50080 Stainless steel 0.8 mm	G Resistant (without seal)	700M 700 mm



Product designation according to UNI EN 1856-2: 2009

Stainless steel single wall.

Temperature	Pressure	Condensate	Corrosion	Flue liner material specification	Sootfire	Min. distance to combustible material
T200 max 200 °C	P1 200 Pa	W Wet utilization	V2 Corrosion class	L50050 Stainless steel 0.5 mm	O No resistance (silicone seal)	40M 40 mm
T200 max 200 °C	P1 200 Pa	W Wet utilization	V2 Corrosion class	L50080 Stainless steel 0.8 mm	O No resistance (silicone seal)	40M 40 mm
T250 max 250 °C	P1 200 Pa	W Wet utilization	V2 Corrosion class	L50050 Stainless steel 0.5 mm	O No resistance (FKM seal)	70M 70 mm
T250 max 250 °C	P1 200 Pa	W Wet utilization	V2 Corrosion class	L50080 Stainless steel 0.8 mm	O No resistance (FKM seal)	70M 70 mm



Product designation according to UNI EN 1856-1: 2009

Stainless steel single wall.

Temperature	Pressure	Condensate	Corrosion	Flue liner material specification	Sootfire	Min. distance to combustible material
T200 max 200 °C	P1 200 Pa	W Wet utilization	V2 Corrosion class	L50050 Stainless steel 0.5 mm	O No resistance (silicone seal)	60 60 mm
T200 max 200 °C	P1 200 Pa	W Wet utilization	V2 Corrosion class	L50080 Stainless steel 0.8 mm	O No resistance (silicone seal)	60 60 mm
T250 max 250 °C	P1 200 Pa	W Wet utilization	V2 Corrosion class	L50050 Stainless steel 0.5 mm	O No resistance (FKM seal)	70 70 mm
T250 max 250 °C	P1 200 Pa	W Wet utilization	V2 Corrosion class	L50080 Stainless steel 0.8 mm	O No resistance (FKM seal)	70 70 mm



Pipe

Dim.	250 mm	500 mm	1000 mm	1500 mm	2000 mm
Cod.	NS1-28X	NS1-58X	NS1-108X	NS1-158X	NS1-208X
Note	thk. 0,5 mm	thk. 0,5 mm	thk. 0,5 mm	thk. 0,5 mm	thk. 0,5 mm
Pcs.	4	9	9	6	6
€/pcs.	€ 15,20	€ 18,50	€ 29,50	€ 42,60	€ 56,00



Adjustable pipe

Dim.	100 / 250 mm
Cod.	NS1-28XT
Note	thk. 0,5 mm
Pcs.	1
€/pcs.	€ 17,20



pipe with measuring point

Dim.	250 mm
Cod.	NS1-28XP
Note	thk. 0,5 mm
Pcs.	4
€/pcs.	€ 19,70



M/M sleeve

Dim.	100 mm
Cod.	NS1-18X
Note	thk. 0,5 mm
Pcs.	9
€/pcs.	€ 7,10



F/F sleeve

Dim.	120 mm
Cod.	NS1-148X
Note	thk. 0,5 mm
Pcs.	6
€/pcs.	€ 19,30



M/F bend

Dim.	45°
Cod.	NS2-48XP
Note	bended from pipe - thk. 0,8 mm
Pcs.	6
€/pcs.	€ 22,00



M/F bend

Dim.	45°
Cod.	NS2-48X
Note	segment bend - thk. 0,5 mm
Pcs.	6
€/pcs.	€ 20,00



M/F bend

Dim.	90°
Cod.	NS2-98XP
Note	bended from pipe - thk. 0,8 mm
Pcs.	6
€/pcs.	€ 27,50



M/F bend

Dim.	90°
Cod.	NS2-98X
Note	segment bend - thk. 0,5 mm
Pcs.	6
€/pcs.	€ 23,20



M/F bend

Dim.	90°
Cod.	NS2-98XIS
Note	with inspection plug
Pcs.	1
€/pcs.	€ 60,00



T element

Dim.	h 194 mm
Cod.	NS13-80XMF
Note	M/F - thk. 0,5 mm
Pcs.	4
€/pcs.	€ 33,00



T element

Dim.	h 194 mm
Cod.	NS13-80XFF
Note	F/F - thk. 0,5 mm
Pcs.	4
€/pcs.	€ 35,20



T element

Dim.	h 197 mm
Cod.	NS13-80XIS
Note	F/F - with inspection
Pcs.	1
€/pcs.	€ 54,10



Seal for inspection

Dim.	
Cod.	VNS20-IS
Note	FKM - T250
Pcs.	1
€/pcs.	€ 3,10



Plug

Dim.	
Cod.	NS12-80X
Note	
Pcs.	4
€/pcs.	€ 16,70



Condensation drain

Dim.	3/4"
Cod.	NS4-8SX
Note	vertical
Pcs.	4
€/pcs.	€ 19,30



Increasing adapter

Dim.	Ø 80 F - Ø 100 M
Cod.	NS8-108XMF
Note	
Pcs.	1
€/pcs.	€ 32,20



Silicone seal

Dim.	
Cod.	20-80
Note	
Pcs.	10
€/pcs.	€ 1,30



FKM seal

Dim.	
Cod.	VNS20-80
Note	FKM - T250
Pcs.	10
€/pcs.	€ 3,30



Wall cover through the wall

Dim.	Øi 80 - Øe 180
Cod.	NS9-828X
Note	l 250 mm - thk. 0,5 mm
Pcs.	1
€/pcs.	€ 30,90



Wall cover

Dim.	Øi 80 - Øe 140
Cod.	NS9-8
Note	metal
Pcs.	20
€/pcs.	€ 5,80



Wall cover

Dim.	Øi 80 - Øe 180
Cod.	NS9-8L
Note	metal
Pcs.	20
€/pcs.	€ 6,20



Wall cover

Dim.	Øi 80 - Øe 142
Cod.	NS9-86
Note	silicone
Pcs.	20
€/pcs.	€ 5,60



Fastening ring

Dim.	
Cod.	NS9-8F
Note	inox
Pcs.	10
€/pcs.	€ 6,50



Wall bracket

Dim.	
Cod.	NS14-80
Note	
Pcs.	10
€/pcs.	€ 8,00



Vertical flue terminal

Dim.	h 152
Cod.	NS6-8CX
Note	male
Pcs.	5
€/pcs.	€ 34,50



Horizontal flue terminal

Dim.	l 146 mm
Cod.	NS10-8SMX
Note	male
Pcs.	4
€/pcs.	€ 21,30



Horizontal flue terminal

Dim.	
Cod.	NS10-48XP
Note	inox - thk. 0,8 mm
Pcs.	6
€/pcs.	€ 38,50



Pipe

Dim.	250 mm	500 mm	1000 mm	1500 mm
Cod.	NS1-210X	NS1-510X	NS1-1010X	NS1-1510X
Note	thk. 0,5 mm	thk. 0,5 mm	thk. 0,5 mm	thk. 0,5 mm
Pcs.	9	9	9	4
€/pcs.	€ 18,60	€ 23,40	€ 36,10	€ 54,20



M/M sleeve

Dim.	100 mm
Cod.	NS1-110X
Note	M/M - sp. 0,5 mm
Pcs.	4
€/pcs.	€ 9,29



F/F sleeve

Dim.	120 mm
Cod.	NS1-1410X
Note	F/F - thk. 0,5 mm
Pcs.	4
€/pcs.	€ 23,70



M/F bend

Dim.	45°
Cod.	NS2-410XP
Note	bended from pipe - thk. 0,8 mm
Pcs.	4
€/pcs.	€ 22,40



M/F bend

Dim.	90°
Cod.	NS2-910XP
Note	bended from pipe - thk. 0,8 mm
Pcs.	4
€/pcs.	€ 29,70



T element

Dim.	h 250 mm
Cod.	NS13-100XFF
Note	F/F - thk. 0,5 mm
Pcs.	4
€/pcs.	€ 38,10



T element

Dim.	h 250 mm - reduced Ø 80
Cod.	NS13-108XFF
Note	F/F - thk. 0,5 mm
Pcs.	4
€/pcs.	€ 38,10



Condensation drain

Dim.	3/4"
Cod.	NS4-10SX
Note	vertical
Pcs.	4
€/pcs.	€ 21,30



Increasing adapter

Dim.	Ø 100 F - Ø 80 M
Cod.	NS8-108X
Note	
Pcs.	1
€/pcs.	€ 32,80



Silicone seal

Dim.	20-100
Cod.	
Note	
Pcs.	10
€/pcs.	€ 1,68



FKM seal

Dim.	
Cod.	VNS20-100
Note	FKM - T250
Pcs.	10
€/pcs.	€ 4,29



Wall cover

Dim.	Øi 100 - Øe 180
Cod.	NS9-10
Note	metal
Pcs.	20
€/pcs.	€ 6,84



Wall cover

Dim.	Øi 100 - Øe 162
Cod.	NS9-106
Note	silicone
Pcs.	20
€/pcs.	€ 6,33



Fastening ring

Dim.	
Cod.	NS9-10F
Note	inox
Pcs.	10
€/pcs.	€ 6,84



Wall bracket

Dim.	
Cod.	NS14-100
Note	
Pcs.	10
€/pcs.	€ 9,29



Vertical flue terminal

Dim.	h 154 mm
Cod.	NS6-10CX
Note	male
Pcs.	3
€/pcs.	€ 36,60



Horizontal flue terminal

Dim.	l 143 mm
Cod.	NS10-10SMX
Note	male
Pcs.	3
€/pcs.	€ 23,20



CLOSE OUT SALE

Pipe

Dim.	250 mm	500 mm	1000 mm
Cod.	NS1-212X	NS1-512X	NS1-1012X
Note	thk. 0,5 mm	thk. 0,5 mm	thk. 0,5 mm
Pcs.	4	4	4
€/pcs.	€ 20,30	€ 25,00	€ 37,90



CLOSE OUT SALE

M/F bend

Dim.	45°
Cod.	NS2-412XP
Note	bended from pipe - thk. 0,8 mm
Pcs.	4
€/pcs.	€ 25,00



CLOSE OUT SALE

M/F bend

Dim.	90°
Cod.	NS2-912XP
Note	bended from pipe - thk. 0,8 mm
Pcs.	4
€/pcs.	€ 35,40



CLOSE OUT SALE

T element

Dim.	h 250 mm
Cod.	NS13-120XFF
Note	F/F - thk. 0,5 mm
Pcs.	4
€/pcs.	€ 42,00



CLOSE OUT SALE

Condensation drain

Dim.	3/4
Cod.	NS4-12SX
Note	vertical
Pcs.	1
€/pcs.	€ 26,30



Silicone seal

Dim.	
Cod.	20-120
Note	
Pcs.	10
€/pcs.	€ 2,30



CLOSE OUT SALE

Wall cover

Dim.	Øi 120 - Øe 170
Cod.	NS9-12
Note	metal
Pcs.	20
€/pcs.	€ 7,60



CLOSE OUT SALE

Fastening ring

Dim.	
Cod.	NS9-12F
Note	inox
Pcs.	10
€/pcs.	€ 7,10



CLOSE OUT SALE

Wall bracket

Dim.	
Cod.	NS14-120
Note	
Pcs.	10
€/pcs.	€ 10,50



CLOSE OUT SALE

Vertical flue terminal

Dim.	h 196 mm
Cod.	NS6-12CX
Note	male
Pcs.	2
€/pcs.	€ 38,10



CLOSE OUT SALE

Horizontal flue terminal

Dim.	L. 140 mm
Cod.	NS10-12SMX
Note	male
Pcs.	2
€/pcs.	€ 23,60