

COASSIALE ALLUMINIO/ALLUMINIO

CONCENTRIC ALUMINIUM/ALUMINIUM

Diametri disponibili/Available diametres

Ø 60/100

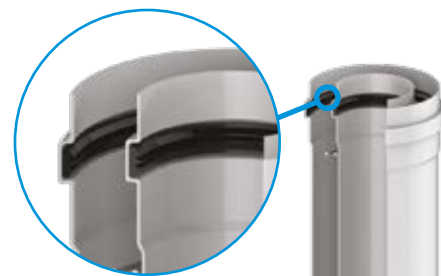
Applicazioni / Applications



Installazione
interna
Indoor
installation



Caldaie
tradizionali
Conventional
devices



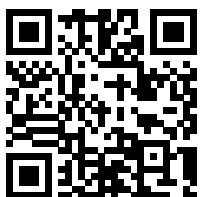
**Guarnizione in silicone
conforme a
UNI EN 14241-1**
Silicone seal compliant
to UNI EN 14241-1

Alluminio
Aluminium

Alluminio bianco
White aluminium
RAL 9003

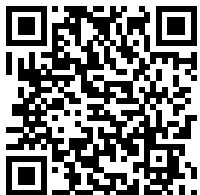


DOCUMENTAZIONE DOCUMENTS



DoP

get.atimariani.it/dop/DOP15.pdf



**Libretto istruzioni
Instruction manual**

get.atimariani.it/man/MANUT-FUM-009.pdf



**Sezione catalogo
Catalogue section**


get.atimariani.it/cat/ALL-ALL-CO.pdf

PERDITE DI CARICO (Pa) HEAD LOSS (Pa)	Ø60/100
Tubo rigido 1 m Rigid pipe	32
Curva 45° Elbow	23
Curva 90° Elbow	33
RESISTENZA A COMPRESIONE COMPRESSION RESISTANCE	Ø60/100
Altezza massima Maximum high	48 kg
COMPRESIONE SUPPORTI SUPPORTS COMPRESSION	Ø60/100
Altezza massima Maximum high	9.9 kg
PESO WEIGHT (kg/m)	Ø60/100
Tubo rigido Single wall rigid	1.50

CE Designazione del prodotto secondo la norma UNI EN 14989-2: 2007 Product designation according to UNI EN 14989-2: 2007

SISTEMA CONCENTRICO IN ALLUMINIO.
ALUMINIUM CONCENTRIC SYSTEM.

TEMPERATURA TEMPERATURE	PRESSIONE PRESSURE	CONDENSA CONDENSATE	CORROSIONE CORROSION	SPECIFICHE PARETE INTERNA FLUE LINER MATERIAL SPECIFICATION	FUOCO DI FULIGGINE SOOTFIRE	DISTANZA MINIMA DA MATE- RIALI INFIAMMABILI/MINIMUM DISTANCE TO COMBUSTIBLE MATERIAL
T200 max 200 °C	P1 200 Pa	W Uso a umido Wet utilization	Vm Classe di corrosione Corrosion class	L11100 Alluminio Aluminium 1.0 mm	0 Nessuna resistenza (con guarnizione) No resistance (with seal)	30 30 mm
T200 max 200 °C	P1 200 Pa	W Uso a umido Wet utilization	V2 Classe di corrosione Corrosion class	L99150 Alluminio Aluminium 1.5 mm	0 Nessuna resistenza (con guarnizione) No resistance (with seal)	30 30 mm



**TERMINALE VERTICALE
ROOF TERMINAL**

Dim. **1300 mm**

Cod./ref. **45-610M**

Note **tetto inclinato da 5° a 30°**

Notes **5° - 30° pitched roof**

Pz/pcs **1**

€/pz. **€ 78,80**



**TEGOLA MARRONE
BROWN TILE**

Dim. **500 x 500 mm**

Cod./ref. **5-TA**

Note **tetto inclinato da 5° a 30°**

Notes **5° - 30° pitched roof**

Pz/pcs **1**

€/pz. **€ 28,20**



**TERMINALE ORIZZONTALE
HORIZONTAL FLUE TERMINAL**

Dim. **850 mm**

Cod./ref. **KKTA610**

Note

Notes

Pz/pcs **1**

€/pz. **€ 30,60**




**TERMINALE ORIZZONTALE
HORIZONTAL FLUE TERMINAL**

Dim. **1000 mm**

Cod./ref. **KKCC100**

Note **con terminale in nylon**

Notes **with nylon terminal**

Pz/pcs **1**

€/pz. **€ 33,00**



**TERMINALE ORIZZONTALE
HORIZONTAL FLUE TERMINAL**

Dim. **1000 mm**

Cod./ref. **KXCC100**

Note **con terminale inox**

Notes **with stainless steel terminal**


Pz/pcs **1**

€/pz. **€ 35,00**



**PROLUNGA
EXTENSION**

Dim.	500 mm	1000 mm	2000 mm
Cod./ref.	KKPC050	KKPC100	KKPC200
Note			
Notes			
Pz/pcs	1	1	1
€/pz.	€ 17,20	€ 23,80	€ 42,20



**CURVA M/F
M/F BEND**

Dim. **45°**

Cod./ref. **2-4610PMF**

Note

Notes

Pz/pcs **1**

€/pz. **€ 18,80**



**CURVA M/F
M/F BEND**

Dim. **90°**

Cod./ref. **2-9610PMF**

Note

Notes

Pz/pcs **1**

€/pz. **€ 20,00**



**COLLARE DI FISSAGGIO
WALL BRACKET**

Dim.

Cod./ref. **14-100**

Note

Notes

Pz/pcs **10**

€/pz. **€ 6,80**



**ROSONE
WALL COVER**

Dim.

Cod./ref. **9-10**

Note **metallo**

Notes **metal**

Pz/pcs **20**

€/pz. **€ 4,80**



**ROSONE
WALL COVER**

Dim.

Cod./ref. **9-106**

Note **EPDM**

Notes

Pz/pcs **20**

€/pz. **€ 4,60**

**ACCESSORI
ACCESSORIES**



**TAPPO PRELIEVO FUMI
FLUE SAMPLING**

Dim. **3/8" - tappo 1/4" / 3/8" - 1/4" plug**

Cod./ref. **67-12P**

Note

Notes

Pz/pcs **10**

€/pz. **€ 5,60**